



The Museum of Ixelles sets the stage/2

DIY-kit

MUSÉE
D'IXELLES
MUSEUM
VAN ELSENE

The show is about to begin! Imagine that your table is transformed into a little theatre set, open to your imagination and ready for a creative adventure? To give your family (or yourself!) the nicest of shows, the Museum of Ixelles is inviting you to give life to some of its art works, with landscapes paintings serving as stage sets and animals as the main characters. Here we go! Ou Let's start, shall we?

Create your own finger puppet theatre!
Our museum guides Lucie and Virginie had turned into little DIY fairies to help you gather all the material you'll need, from cut-out templates to sewing patterns

Ready? Action!

The Museum of Ixelles sets the stage

An original idea by Virginie Mamet and Lucie Burton, museum guides

Editorial direction:

Claire Leblanc, Director of the Museum of Ixelles

and Stéphanie Masuy, Head of Education

Writing and graphic design: Lucie Burton, Virginie Mamet, Stéphanie Masuy

With the collaboration of Gaëlle Lardeux, trainee

Works:

Jean Brusselmans, Snowy Landscape, 1938 © Museum of Ixelles, Sabam 2020

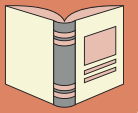
Felix De Boeck, The pigeon, 1928
© Museum of Ixelles, Sabam 2020



MUSÉE
D'IXELLES
MUSEUM
VAN ELSENE

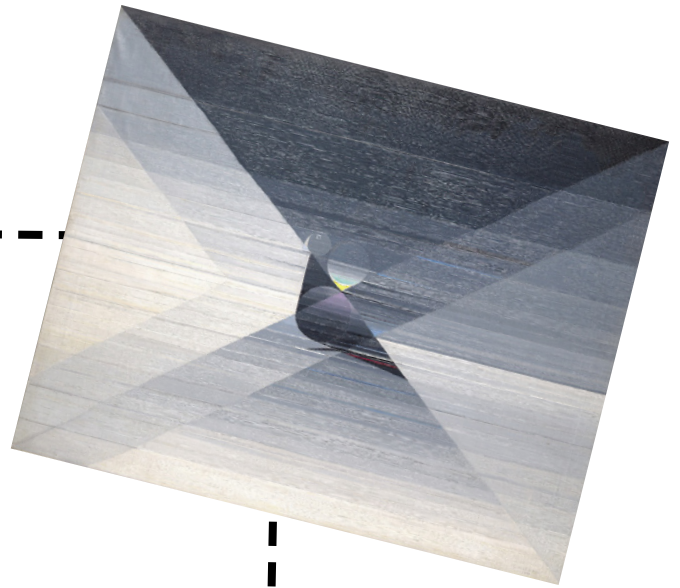


Little pigeon...



Pigeon,
Winged cloak of grey,
In the city's hellish
maw,
One glance and you fly away,
Your grace holds me in awe.

(C'est arrivé près de chez
vous (Man Bites Dog),
Belgian movie, 1992)



How many
triangles do
you see in this
work?



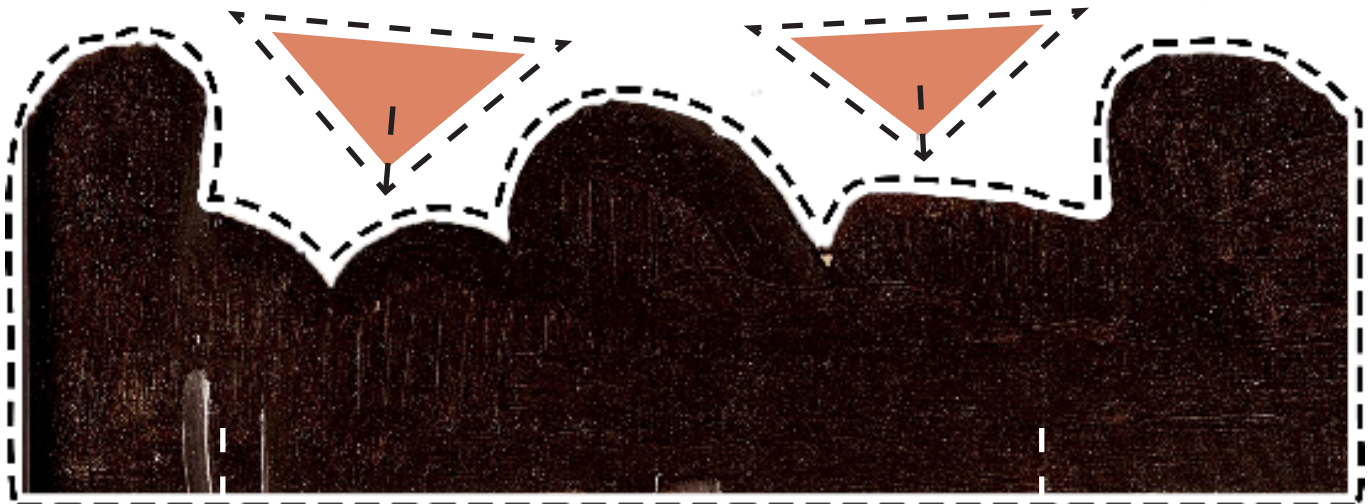
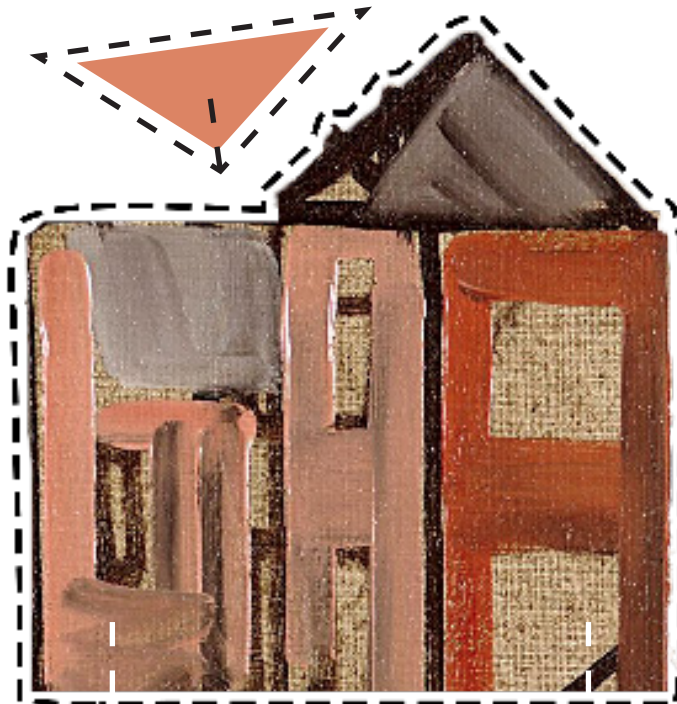
For the painter Jean
Brusselmans, nature was «
a marvellous mathematical
monument ». Triangular
roofs, rectangular houses,
square windows and round
bushes, that's all we
need to make a fantastic
geometrical decor!

What is the
first thing that
comes to your
mind when you
look at this
painting?

...has frozen wings.

The sets

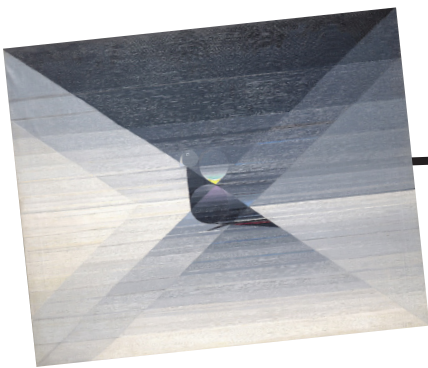
1. Print the scenery.
 2. Glue them on a thin cardboard sheet (e.g. a cereal box).
 3. Cut out each piece. Don't forget the small triangles.
 4. Assemble the pieces together by inserting the triangles into the notches.
 5. Place your set on a table.
- That's it!



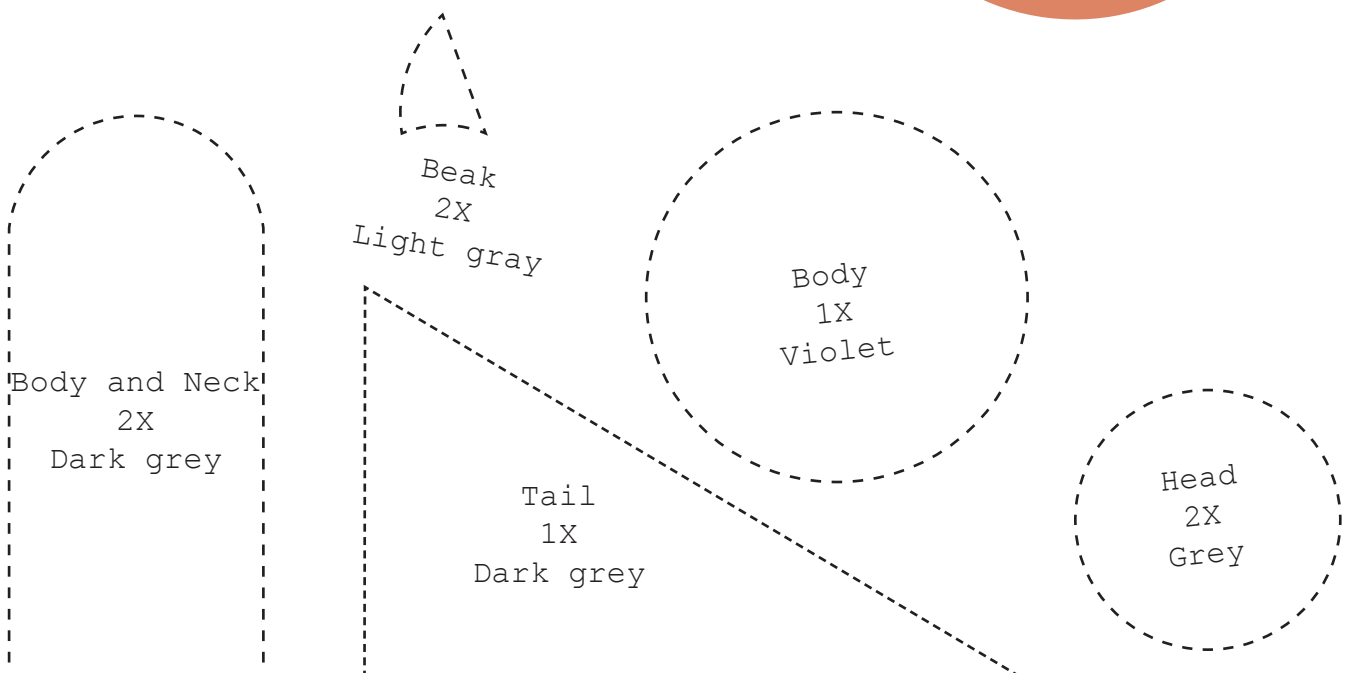
The ready-to-sew pigeon's puppet



1. Print the template and cut out the different pieces.
2. Cut out the shapes in the felt according to the colours and the number of pieces.
3. Take a needle and thread to assemble the pieces, leaving an opening for the finger.
4. Don't hesitate to add feathers or other originalities to your pigeon.



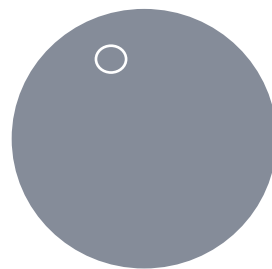
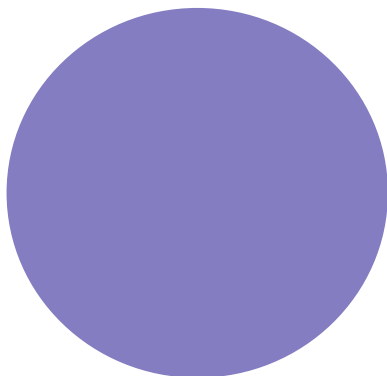
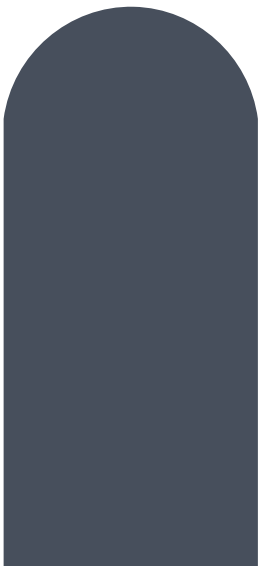
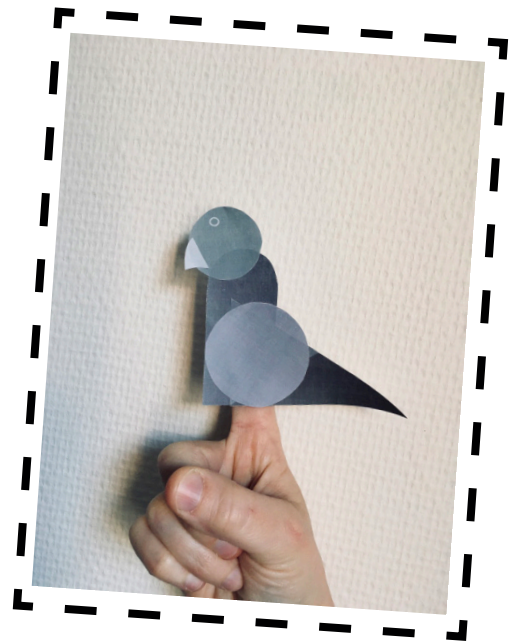
The artist Felix De Boeck lived on a farm near Brussels, in Drogenbos. He had to work in the fields six days a week, but on Sunday, he would lock himself up to paint.



The pigeon's puppet cut-out



1. Print the page and cut out the different parts.
2. Glue the parts together to create your animal
3. Add the ring to the base of the animal by wrapping the strip around your finger to hold the puppet. You can use invisible tape to secure it to fit.
4. If you want to embellish your animal, don't hesitate to decorate it according to your taste.



Ring